

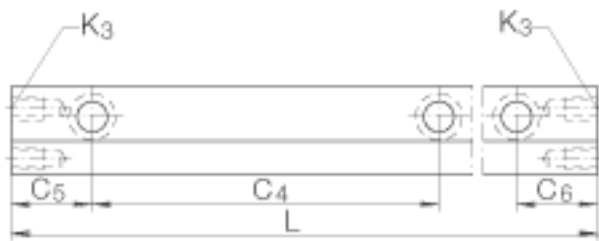
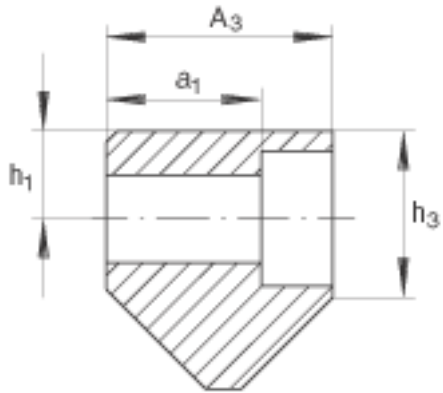
## Guideways V4525 (Series V)

V guideways with angled needle roller flat cage; corrosion-resistant design possible

The datasheet is only an overview of dimensions and basic load ratings of the selected product. Please always observe all the guidelines in these overview pages. Further information is given on many products under the menu item "Description". You can also order comprehensive information via the Catalogue ordering system ([https://www.schaeffler.de/content.schaeffler.de/en/news\\_media/index.jsp](https://www.schaeffler.de/content.schaeffler.de/en/news_media/index.jsp)) or by telephone on +49 (91 32) 82 - 28 97.

h3	14 mm	
A3	25 mm	Tolerance: 0/-0,2
L <sub>max</sub>	1000 mm	Guideways longer than the stated maximum length are available in several sections. For multi-piece guideways, state total length when ordering.
37)		Holes for wipers, end piece
38)		Hole type 15
39)		Hole type 10
4)		Marking
40)		Hole type 03
a1	18,2 mm	
a <sub>min</sub>	1,3 x 45°	
C4	80 mm	MV3015; for L=100 mm to 109 mm, C4=35 mm (3 holes).

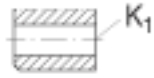
		Other sizes: for $L < C4 + C5 \text{ min} + C6 \text{ min}$ , $C4 = 50 \text{ mm}$ .
C5 min	20 mm	C5 and C6 are dependent on the guideway length and are identical at both ends of the guideway. $C5 \text{ and } C6 = (L - \text{total } C4) / 2$ ; values must not be less than C5 min and C6 min.
C6 min	20 mm	C5 and C6 are dependent on the guideway length and are identical at both ends of the guideway. $C5 \text{ and } C6 = (L - \text{total } C4) / 2$ ; values must not be less than C5 min and C6 min.
h1	7,5 mm	
K1	M6	for screws to DIN 912- 8.8
K3	M6	
tmin	15 mm	



38)



39)



40)

