

## Carriages KWVE25-B (Series KWVE..-B)

standard carriage, four-row, full complement ball set

The datasheet is only an overview of dimensions and basic load ratings of the selected product. Please always observe all the guidelines in these overview pages. Further information is given on many products under the menu item "Description". You can also order comprehensive information via the Catalogue ordering system ([https://www.schaeffler.de/content.schaeffler.de/en/news\\_media/index.jsp](https://www.schaeffler.de/content.schaeffler.de/en/news_media/index.jsp)) or by telephone on +49 (91 32) 82 - 28 97.

H	36 mm	
B	70 mm	
L	83,3 mm	
1)	Locating face	
2)	Marking	
3)	Lubrication nipple with tapered head to DIN 71 412-B M6 is supplied loose	
A1	23,5 mm	
A2	6,5 mm	
A3	11 mm	
A4	6,5 mm	
aL max	53 mm	a L and a R are dependent on the length l max of the guideway
aL min	20 mm	a L and a R are dependent on the length l max of the guideway

aR max	53 mm	a L and a R are dependent on the length l max of the guideway
aR min	20 mm	a L and a R are dependent on the length l max of the guideway
b	23 mm	Tolerance: -0,005/-0,03
G2	M8	For screws to DIN ISO 4762-12.9 Max. tightening torque in Nm: M5 = 5,8 M6 = 10 M8 = 24 M10 = 41 M12 = 83 M14 = 140 If there is a possibility of settling, the fixing screws should be secured against rotation.
h	18,7 mm	
H1	5,1 mm	
h1	8,7 mm	
H4	10,9 mm	
H5	5,25 mm	
JB	57 mm	
JL	45 mm	
jL	60 mm	
JL6	12,85 mm	
JLZ	40 mm	
K1	M6	For screws to DIN ISO 4762-12.9 Max. tightening torque in Nm:

M3 = 2,5

M4 = 5

M5 = 10

M6 = 17

M8 = 41

M10 = 83

M12 = 140

M14 = 220

M16 = 340

If there is a possibility of settling, the fixing screws should be secured against rotation

K3

M6

For screws to DIN ISO 4762-12.9

Max. tightening torque in Nm:

M3 = 2,5

M4 = 5

M5 = 10

M6 = 17

M8 = 41

M10 = 83

M12 = 140

M14 = 220

M16 = 340

If there is a possibility of settling, the fixing screws should be secured against rotation

K6

M6

For screws to DIN ISO 4762-12.9

Max. tightening torque in Nm:

M3 = 2,5

M4 = 5

M5 = 10

M6 = 17

M8 = 41

M10 = 83

M12 = 140

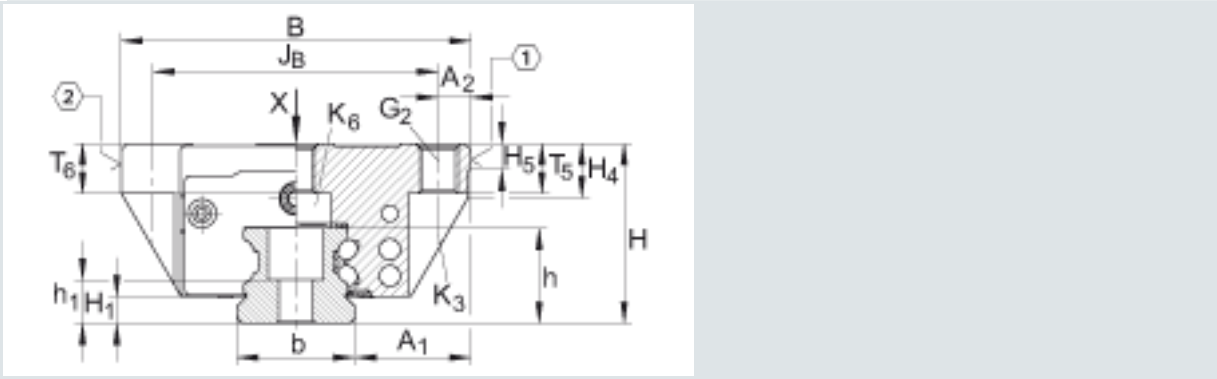
M14 = 220

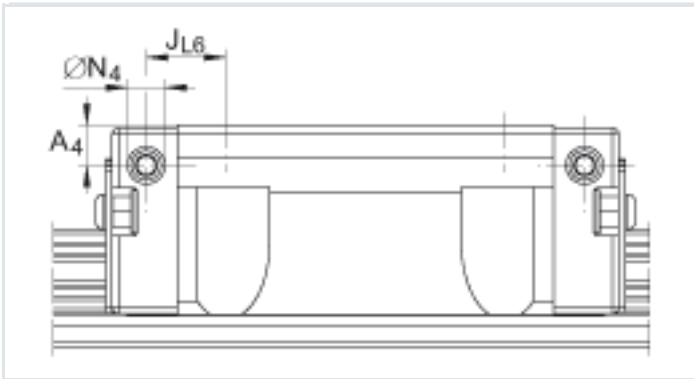
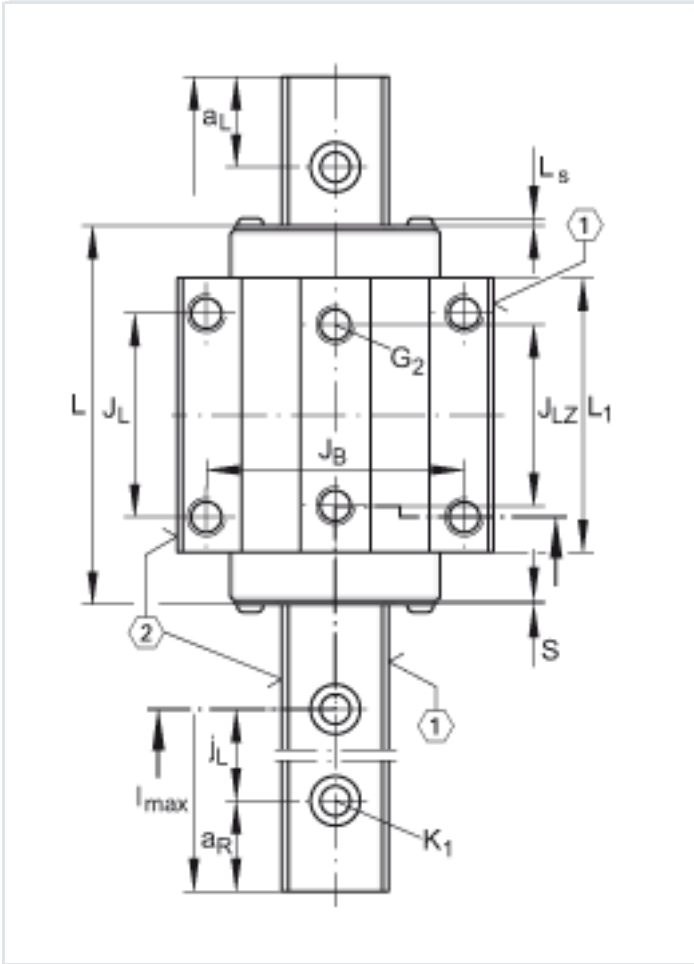
M16 = 340

If there is a possibility of settling, the fixing screws should be secured against rotation

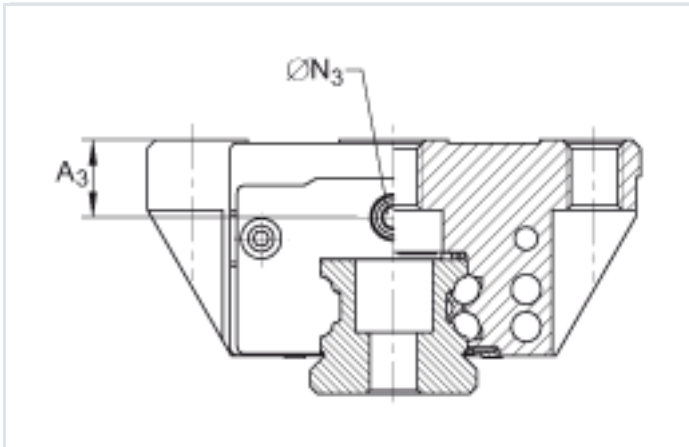
L1	60,7 mm	
l <sub>max</sub>	2960 mm	Maximum length of single-piece guideways; longer guideways are supplied in several sections and are marked accordingly. Maximum single-piece guideway length of 6 m by agreement.
L <sub>S</sub>	1,65 mm	
N <sub>3</sub>	5,5 mm	Maximum permissible screw depth for lubrication connector: 7 mm
N <sub>4</sub>	5,6 mm	Maximum permissible screw depth for lubrication connector: 7 mm
S	0,8 mm	
T <sub>5</sub>	10 mm	
T <sub>6</sub>	10 mm	
W <sub>6</sub>	6 mm	Width across flats
m <sub>w</sub>	0,68 kg	Mass of carriage
m <sub>s</sub>	2,7 kg/m	Mass of guideway
		Calculation of basic load rating according to DIN 636, increased basic dynamic load rating possible on the basis of practical experience.
C	17900 N	Basic dynamic load rating
C <sub>0</sub>	37000 N	Basic static load rating
M <sub>0x</sub>	510 Nm	Static moment rating about X axis

$M_{0y}$	395 Nm	Static moment rating about Y axis
$M_{0z}$	395 Nm	Static moment rating about Z axis

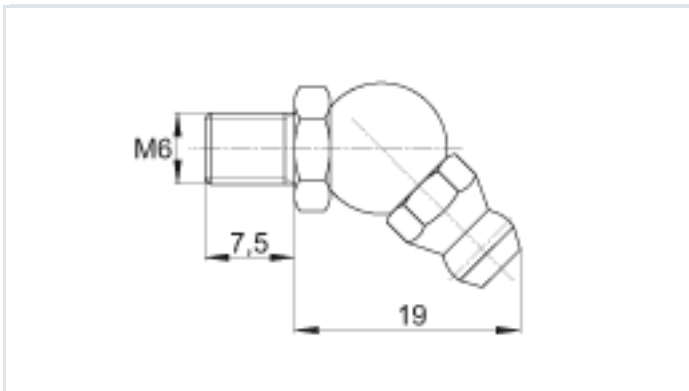




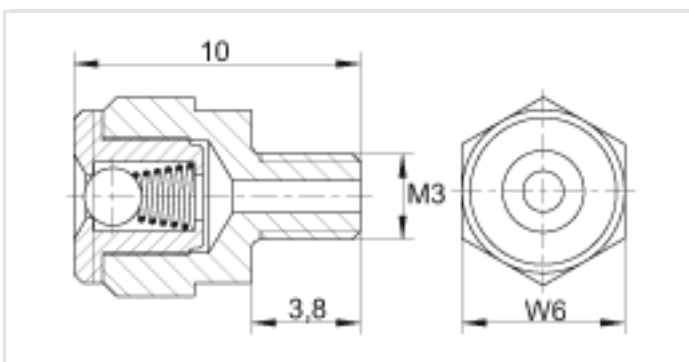
Lubrication connector on lateral face



Lubrication connector on end face



Lubrication nipple 3)



Lubrication nipple 3)

